

# Social Impact Project Services

---

Define, Design, Deploy and Deliver

January 2023



# About CSRBOX

CSRBOX is a social impact research, communication and project management organization. We work on client projects from concept to project design, M&E to Impact Assessment. Technically, we fall in the category of boutique impact-consulting firm. Our services encompass 4 principal components— Design, Execute, Monitor & Evaluate and Report.

## Design

- Need Assessment Baseline Studies
- CSR Projects Design
- Onboarding of NGO partners

## Execute

- Project Implementation
- Government Partnerships
- CSR Projects Management
- Employee Volunteering

## M&E - Report

- Project Monitoring and Evaluation
- Project Reporting
- Impact Assessment and SROI mapping

## Our Platforms



Advocacy Platform on Nutrition (Mother and Child Health)



Building capacity of Development Professionals



Largest Impact Communication Crafting Stories of social impact



Asia's Largest CSR Forum to bring all CSR professionals to collaborate

**Team of 110+ professionals and 50+ Consultants**

**87% Client retention in CSR services segment since 2014**

**Official Partner with PSA Office, Govt. of India**

**Pan India Presence 10+ State Govt. Partnerships**

# About BharatCares



BharatCares (CSRBOX Foundation) is the social impact arm of CSRBOX. We believe in innovations, technology, and scale for providing solutions to the problems that we as a society have been grappling with. BharatCares works as a social solution bridge for communities, innovators and funders to get the best implementation model in place. We strive to provide better education, health, employability skills, and entrepreneurial ecosystem support to underprivileged communities. We have been implementing CSR projects for a few large CSR companies including **IBM, Diageo, Bosch, Cadila Pharma, Arvind Ltd, Airbus, PNB Housing Finance Ltd, DCM Shriram, MRF Tyers, L&T, Bosch India and others.**

We have our programs in Gujarat, Rajasthan, Delhi/NCR, Haryana, Telangana, Tamil Nadu, Uttar Pradesh and Maharashtra.

For more information, visit: [www.bharatcares.org](http://www.bharatcares.org)

## Our Core Areas of Work



**Education**



**Health**



**Skill  
Development**



**Environment**



**WASH**

# Our Journey

**2013**



**2014**



**2016**



**2018**



**2022**

**Inception  
Of NGOBOX**

A platform for development sector professionals and organizations to find relevant opportunities  
[www.ngobox.org](http://www.ngobox.org)

**1<sup>st</sup> Edition of  
India CSR  
Summit**

Hosted 9 editions so far, the largest platform for corporates and NGOs social enterprises and government agencies to collaborate  
[www.indiacsrsummit.in](http://www.indiacsrsummit.in)

**Launched  
CSRBOX**

An Impact Communication platform. 400 + partner NGOs and 100 + social enterprises closed network.  
[www.csrbox.org](http://www.csrbox.org)  
Launch of Impact Advisory Services for corporate

**Inception of  
Bharatcares  
(a non profit Trust  
By CSRBOX)**

Non profit trust established by CSRBOX, to implement CSR Projects on ground  
[www.bharatcares.org](http://www.bharatcares.org)

**Delivering  
Consulting and  
Project  
Implementation**

On ground delivery of CSR projects continues with strong M&E and Reporting framework in place

# Our Impact



## EDUCATION

3,684+ STUDENTS& TEACHERS  
14,736+ LIVES IMPACTED



## WOMEN EMPOWERMENT

SUPPORTED 745+ WOMEN  
2,980 LIVES IMPACTED



## LIVELIHOOD & SKILLS DEVELOPMENT

IMPACTED 4,94,709+  
PEOPLE IMPACTED



## HEALTH & NUTRITION

SUPPORT 2100+ PATIENTS DAILY  
SUPPORTED 120+ DOCTORS AND  
MEDICAL STAFF  
IMPACTED 9,309+ PEOPLE



## ENVIRONMENT

GRAFTED 8300+ NEW PLANTS  
4,240 HOUSEHOLDS IMPACTED  
IMPACTED 17,300+ LIVES

# Our Clients and Partners



# Environment & WASH

---

# Environment and Water Initiatives

## Barely Plastic

Nudging the students and communities to reduce the use of plastic



## Water Filtration Plant Installation

Making clean drinking water accessible



## Miyawaki Plantation

Creating dense forest with native plants.

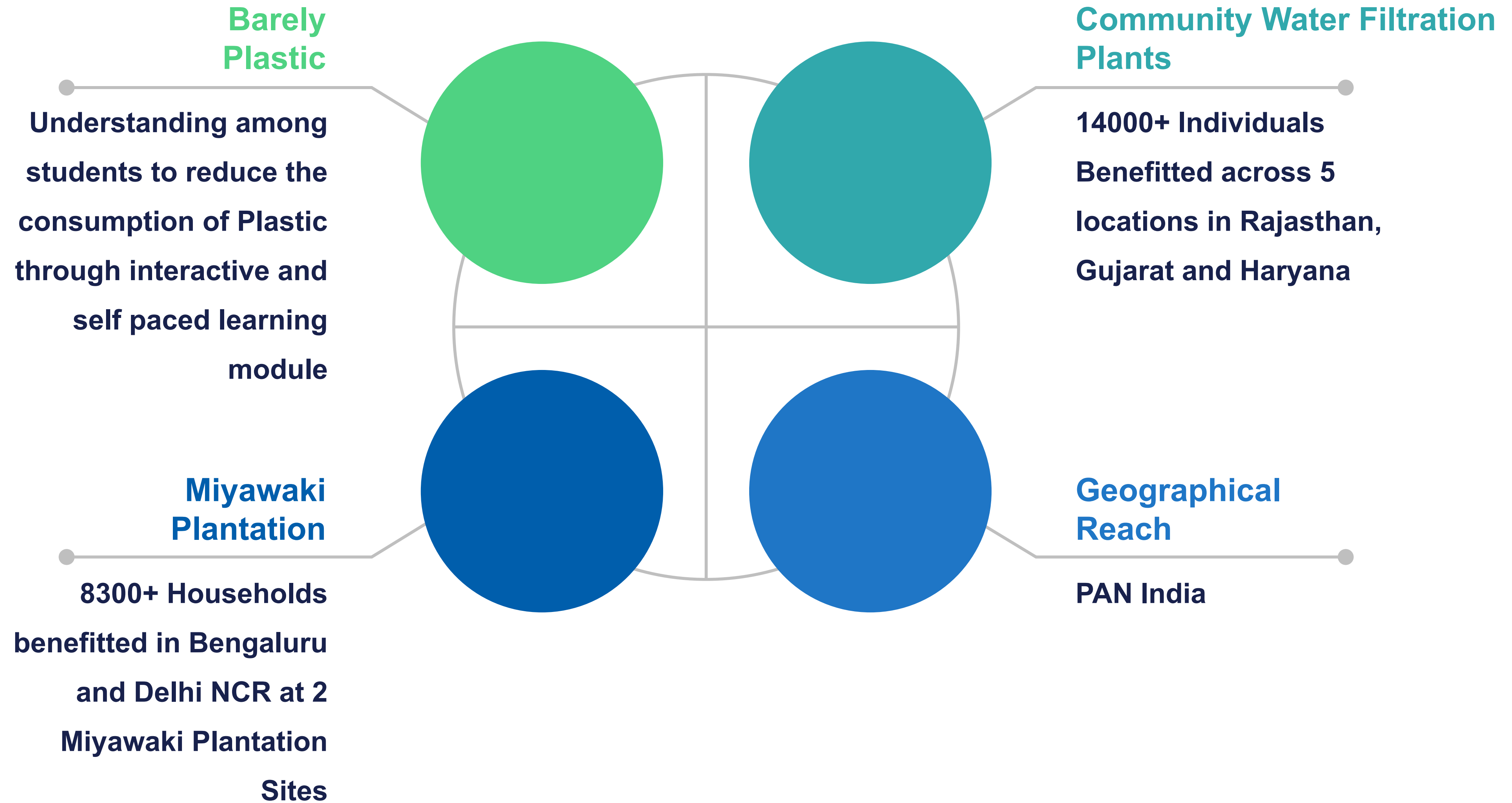


## Natural Resource Management

Watershed management in rural areas



# Our Impact

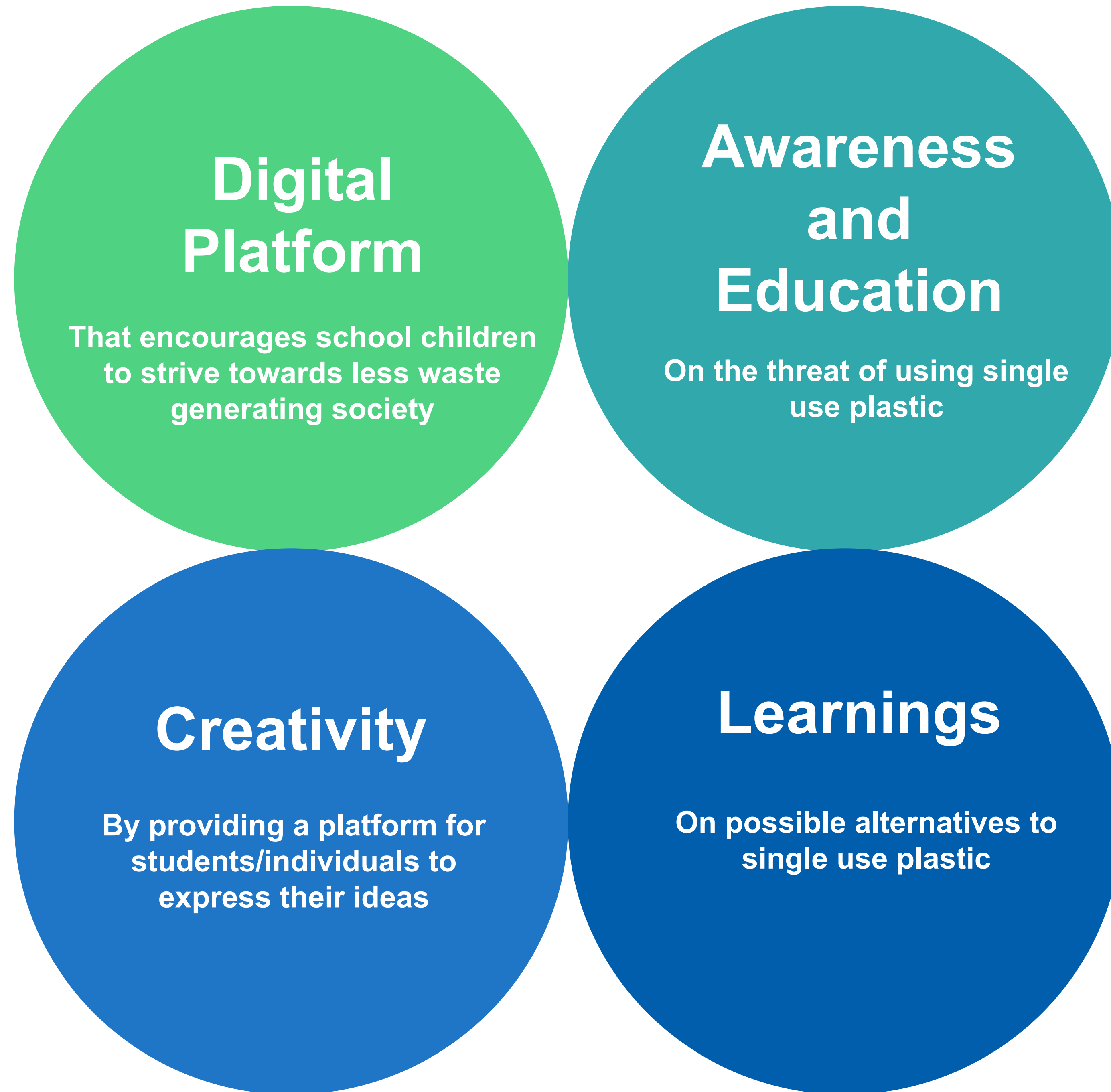


# 1. Barely Plastic



Nudging the Young Generation to make conscious choices for a better planet

# Our Model



**Barely Plastic  
Session  
Conducted in  
Online Mode**



## 2. Urban Forests (Miyawaki Plantation)

Due to increasing pollution, cities' air quality index is speedily degrading, causing adverse impacts on the health of the citizens.

To reduce the carbon footprint in urban India and lower temperatures in concrete heat islands, creation of Urban Forests is helpful.

**The Miyawaki method is a panacea for urban woes. It also reduces air and noise pollution, attracts local birds and insects, helps in carbon sequestration.**



# Interventions and Impact Landscape

## Key Processes

Identification of sites  
and due permission  
from local authorities

Soil testing and debris  
cleaning

Tree Plantation

Regular watering and  
caretaking by gardener

## Impact Numbers

Location	Number of Saplings	Impact Numbers
Anekal Lake, Marasur Village, Bengaluru	6300	770 Households
Narela Site, Raja Harishchandra Hospital, Delhi	2000	3000 Patients, 287 Medical Staff

# Anekal Lake, Marasur Village, Bengaluru



High Density  
Miyawaki  
plantation



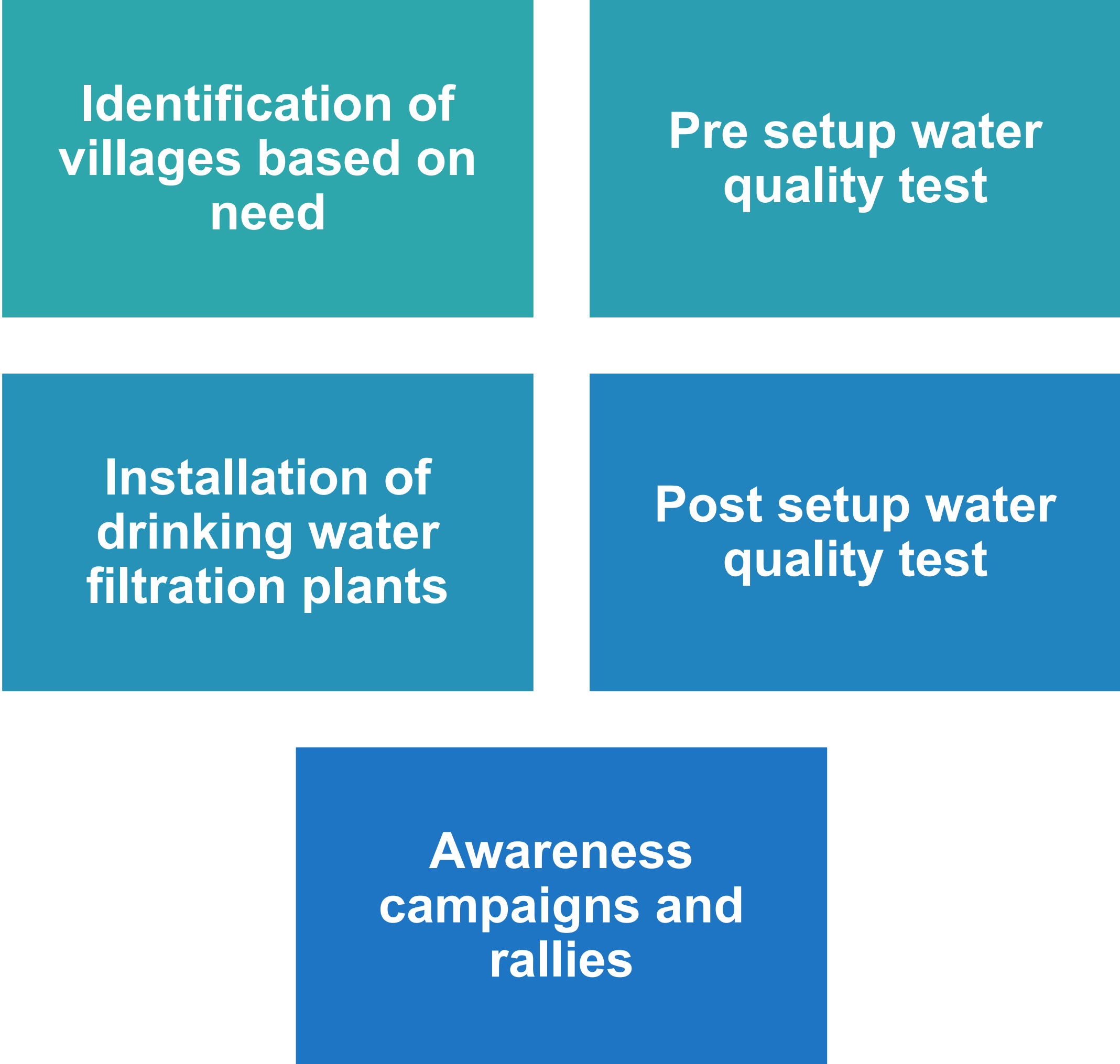
# 3. Community Filtration Water Plants

Community-level decentralized solutions to create affordable provisions for Safe Drinking water



# Interventions and Impact Landscape

## Key Processes



## Impact Numbers

Location	Impact Numbers
Sachana Village, Ahmedabad	600 Rural Households, 2400+ Individuals
Jakhwada Village, Ahmedabad	520 Rural Households, 2200+ Individuals
Khori Village, Rewari	800 Rural Households, 3200+ Individuals
Rajpura Village, Rewari	450 Rural Households, 1800+ Individuals
Kaladwas Village, Udaipur	500 Rural Households, 2000+ Individuals



Community water plants installed in Udaipur and Ahmedabad

# Success Stories



“I use the water from the water filtration plant at my snacks stall. Earlier I purchased water @ INR 20 per 20 litre-bottle. The water filtration plant has helped to reduce my water related cost by 75%. Thanks to the BharatCares for installing this plant.”

**Jayeshbhai Parmar, Resident, Sachana Village, Viramgam, Ahmedabad**



“Members from CSRBOX Team conducted awareness rallies using mike system on rickshaw. Posters on benefits of drinking water from the plant were distributed in the village. Drawing competitions were also conducted in school to create more awareness. All these initiatives have helped to increase awareness among the residents about drinking clean and pure drinking water-dispensed by the plant”

**Rajubhai, Sarpanch, Sachana Village, Viramgam, Ahmedabad**

## 4. New Cluster Program

This program aims to Strengthen Natural Resources & Livelihood for Drought Prone Region. A region that is drought prone and with limited rainfall, farmers tend to get into the burden of debt and abandon farming or sell their lands for migrating into urban areas. It is important that natural resources like soil & water are optimally used. Additionally, focus should be on harnessing the potential of the community for self-sustenance. This initiative addresses these problems through three models- Soil and Water Conservation, Agricultural & Irrigation Support and Non-Agriculture Livelihood & Renewable energy.



**Soil and Water Conservation-** The key objectives are to overcome the water scarcity and to control soil erosion in the identified villages.

**Agricultural & Irrigation Support-** The key objectives are to create livelihood opportunities through supportive measures that enable more crop production.

**Non-Agriculture Livelihood & Renewable energy-** The key objective is to empower the community for sustainability & make the community self-reliant.

# 5. WASH: Essential Wash Intervention

## WHAT?

Water, Sanitation and Hygiene (WASH): The targets of the SDG 6 include achieving universal and equitable access to safe and affordable drinking water for all and access to adequate and equitable sanitation and hygiene for all.

## WHY?

Handwashing with soap (HWWS) has been linked to: 1) 16-23% reduction in risk of acute respiratory infection; 2) 50% reduction in pneumonia; 3) Up to 45% reduction in risk of endemic diarrhea; AND 4) Substantial reduction in neonatal infections.

## HOW?

- Increase awareness on prevention, protection and spread of infections in the community
- Improve hand hygiene knowledge and practices in the community and schools with priority focus on hand washing with soap (HWWS)
- Advocacy for enhanced commitment and resources for improving hand washing services and coverage



3-pronged approach building on our tried and tested hygiene interventions focused on hand hygiene and environmental hygiene.



\*In collaboration with our NGO Partner

# 6. Environmental Trust



## Project Vision

Scaled up Climate Change solutions on ten million hectares of landscapes and water bodies directly/indirectly across the globe, impacting ten million livelihoods, and sequestering a billion MT carbon by 2035



## Project Purpose

Discover and scale solutions to combat climate change to enhance human and the planet's well-being

# Projects Details

## 1. Afforestation

- Social Forestry
- Urban Forestry
- Mangroves Restoration

## 2. Agroforestry

It is a unique land management approach that intentionally blends agriculture and forestry to enhance productivity, profitability and environment stewardship.

## 3. Water Management

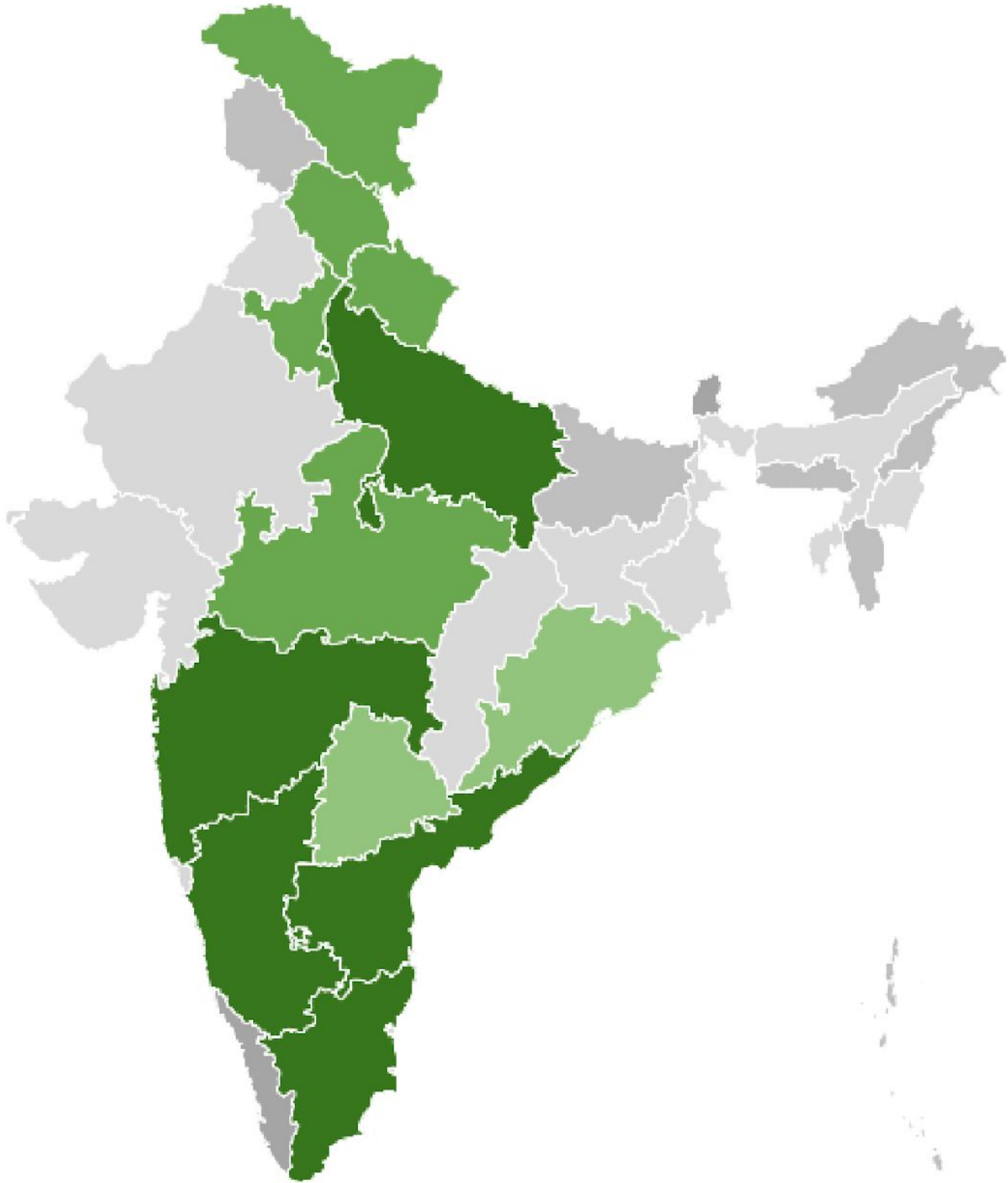
- Lake Rejuvenation
- Pond Restoration
- Open Well Restoration
- Step Well Restoration

## 4. Waste Management

- Solid Waste Management & Establishment of Material recovery facility

## 5. Conversation and Restoration

- Solar Powered Bio Digesters
- Renewable Energy- Flexi Bio-gas units
- Renewable Energy- Solar Micro-grids.



### Afforestation

Andhra Pradesh  
Bengaluru  
Delhi-NCR  
Haryana  
Himachal Pradesh  
Karnataka  
Maharashtra  
Odisha  
Telangana  
Tamil Nadu  
Uttar Pradesh

### Agroforestry

Andhra Pradesh  
Haryana  
Karnataka  
Maharashtra  
Madhya Pradesh  
Uttarakhand

### Water Conservation

Bengaluru  
Delhi-NCR  
Haryana  
Himachal Pradesh  
Karnataka  
Maharashtra  
Telangana  
Uttar Pradesh

### Waste Management

Delhi-NCR  
Himanchal Pradesh  
Ladakh  
Telangana  
Uttar Pradesh

\*Geographical Presence in 13 States/UT

\*In collaboration with our **NGO Partner**

# 7. Solar power Installation



## GOAL

- To create a better world for the future generation
- To enhance the humanity present in one self

## STRATEGY

Making people realize the importance of a quality society, community and environment by using hands-on practical methodologies and innovative approaches



\*In collaboration with our NGO Partner

# Environment–Solar power Installation

- **Installation of Solar street lights and blinkers**
- **Solar lamps distribution for households in remote locations**



# 8. Water Conservation and Treatment



Types of Interventions: Tank De-siltation

Renovation of Urban Water Bodies

Farm Ponds | Check dams

Roof Water Harvesting

RFD & LBSs | CCTs

\*In collaboration with our NGO Partner

# 9. SOCIAL FORESTRY & AFFORESTATION PROGRAMME

This program has been intervening in social forestry and forestation Programme through promotion group nurseries, farmer's nurseries, institutional nurseries and decentralized people's nurseries in order to promote afforestation of wastelands, degraded forest lands as well as planting trees on bunds in agricultural lands owned by the farmers themselves.



**\*In collaboration with our NGO Partner**

# 10. MRF ESTABLISHMENT in Villages and Municipalities/Govt. & Pvt. Institutions

Through this model the aim is to improve the efficiency of the processes used to manage dry waste by the formal sectors.

- ✓ **Collection** – Designing educational trainings to improve segregation at source, and create collection mapping over the to reduce logistic cost.
- ✓ **Zero Dry Waste** – Streamlining the supply chain of all types of dry waste to ensure zero dry waste ends up in landfills.
- ✓ **Social Support Program-** For our unsung heroes (Safai Saheli & Safai sathi) we will create support program in terms of health, education and economic.

## COLLECTION

Enhancing the collecting process by consulting in IEC and improving collection strategies.



## END PROCESS MANAGEMENT

All different categories of processed dry waste is given suitable end solutions.



## SEGREGATION

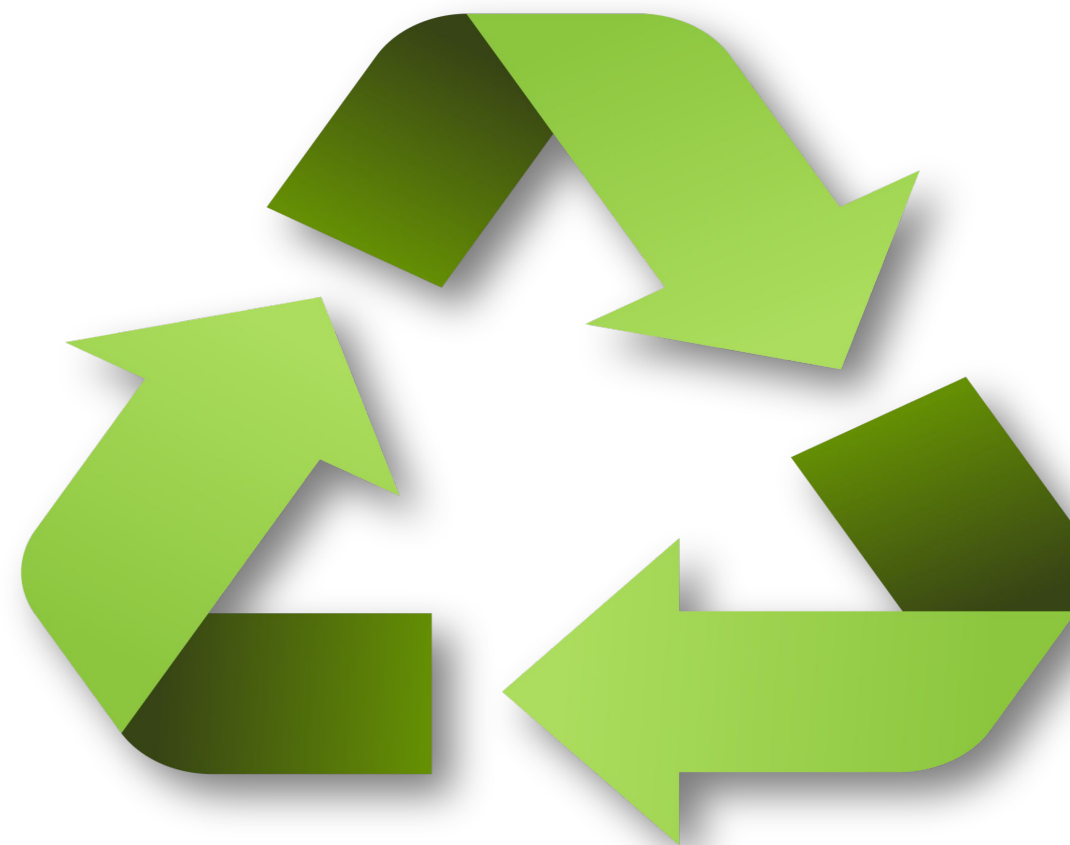
Deploying SafaiSathis who will segregate the collected waste at this station and a supervisor who will manage all the data.



\*In collaboration with our Technical Partner

# 11. MRF ESTABLISHMENT in Villages and Municipalities/Govt. & Pvt. Institutions

- ✓ **Waste Collection from Informal Sector**– we are registering ragpickers & local Bhangarwalas with our collection program for Plastic & PET bottle.
- ✓ **Processing/Segregation** – With our processing partner, we segregate, baled the plastic & pet bottle with allotted Safai Sathi by Partner.
- ✓ **Plastic & PET Bottle End Management** – Streamlining the supply chain of all types of plastic waste to ensure zero waste ends up in landfills by connecting with our end recyclers/Partners.
- ✓ **Social Support Program**- For our unsung heroes (Safai Saheli & Safai sathi) we will create support program in terms of health, education and economic.



\*In collaboration with our Technical Partner

# 12. Rural Livelihood Support Program

The program aims to support the rural community by furnishing livelihood opportunities through planting fruit and fodder bearing trees on the lands of farmers. The project aims to strengthen their livelihood through sustainable means and focus on growing trees of varied plant species like Pomegranate, Ber, Lemon and many more. These trees help promote women empowerment and biodiversity, alleviate poverty and bring greenery to the most arid and degraded lands. It not only creates greenery in the arid region but has also gone a long way in providing livelihood to the poor farmers.



## How it works?



On-ground  
survey to  
Identify farmers



Pre-plantation  
Preparation



Transportation  
of saplings,  
soil, manure



Plantation  
of saplings



Monitoring  
for 2 years



Annual  
update  
report for 2  
years

**Objectives:** Aimed at providing a sustainable income for farmers

**Location** - Barmer and Jaisalmer, Thar desert, Rajasthan

\*In collaboration with our NGO Partner

# 13. Community Plantation Programs

Aimed to convert a denuded area of land into a lush green forest to create an ecosystem involving community members who will help to grow and nurture trees in long term. Also by involving communities at every stage, Thus creating a emotional connection and awareness

## Build

Laying down the foundation of greenery on a denuded community land

## Grow

SankalpTaru takes the ownership of planting trees and maintaining them for an agreed period of time

## Transfer

At the end of its agreed tenure, transfer of a healthy and green forest back to the community owner



\*In collaboration with our NGO Partner

# 14. Ujala Project

Jalgaon district lies in north Maharashtra and is an aspirational district of India. The district economy is primarily dependent on agriculture and is famous for banana production.

To this day, these villages are still without access to basic amenities such as electricity, all-weather roads, potable source of drinking water, toilets, functioning ICDS etc. The absence of a stable energy source is a huge detrimental factor in the overall development of these villages. This initiative conceptualized and implemented **project 'UJALA'** through which **sustainable energy solutions such as solar home lighting systems, solar torches, solar street lights, solar panels for schools, and solar pumps have been provided.**

**Impact Generated:** The project impacted the energy needs of 574 persons of 112 households in 3 villages.



# 15. Technology driven Sustainable Sanitation Solutions

To provides environment friendly, water saving & affordable WASH systems for healthy sanitation practices that save lives and increase economic activity potential.

Range of Product provided by under this program are:

1. Bio-Digester – Using DRDO's Anaerobic Microbial  
• Inoculum (AMI). As our core product, we use it for:
  - IHHT
  - With Community/Public Toilets
  - Retrofitting
  - As Community Digester for large group of HHs
2. Modular Toilets – Made in three Categories
  - Eco Board Cabin Bio-Toilet
  - FRP Cabin Bio-Toilets
  - MS Puff Cabin Bio-Toilets
3. Fly Ash Bio-Toilets – Made from Fly ash bricks with Bio-Digester at Ultra-Low Cost • FSTP – Bio-Digester as part of the FSM process at FSTP



**\*In collaboration with our Technical Partner**

# 16. ADAPTING TO CLIMATE CHANGE THROUGH WATER MANAGEMENT- Rainwater Harvesting System (RWHS)

Under this initiative, nature based, cost-effective and traditional structures for rainwater harvesting are constructed and erected at different places in rural areas of Rajasthan, with the aim to assist poorest & marginalized communities with accessibility of water through maximum aquifer recharge. According to the development index by Planning Commission of India, Karauli stands in the topmost 100 backward district in the country, because of inadequate rainfall, degrading ground water level and least water retention capacity of the soil. There is long-term irreversible damage in this region which has raised a severe pressure on scarce resources leading to further destruction of natural resources and the environment.



## Objective

- To implement rain-water harvesting with indigenous communities in the project area for sustainable development and livelihood generation.
- To enhance the capacity of the indigenous communities in water management and use efficiency.

**\*In collaboration with our NGO Partner**



**Bharat**  
**Cares**



**THANK YOU !!**